

Jade Sandwich counter

self contained



Electronic controller



Blown airwell



Removable air ducts



Removable cassette



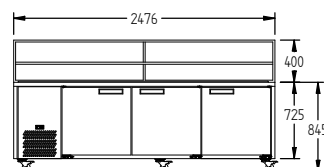
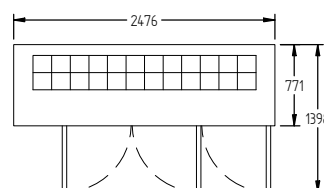
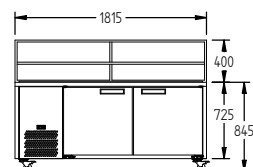
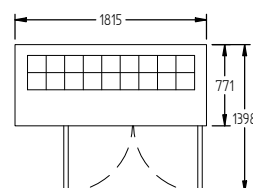
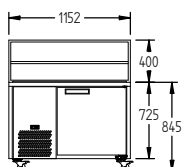
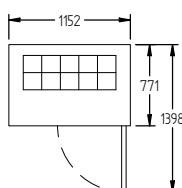
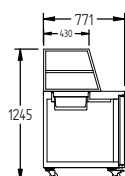
10 Amp power

Our Australian made and designed sandwich counters are engineered to perform in the harshest environments that kitchens can dish up. They are designed to highlight your fresh ingredients while providing you quick access, a large preparation area and huge storage space for the busiest kitchen.



Advantages

- High ambient rating for hard working environments
- CoolSmart electronic controller for energy efficiency and even temperatures
- Fully enclosed stainless steel well under food pans—prevents food from dropping into cabinet
- Front mounted condenser with removable grill for ease of cleaning
- Square glass canopy
- Polypropylene cutting board (10 mm thick)
- One plastic coated shelf per door
- Refrigerated blown air over and under ALL pans—maximizes food holding capacity and refrigeration efficiency
- Removable blown air ducts for easy cleaning
- Polycarbonate sliding lids over blown air well
- Stainless worktop
- Self closing solid doors
- Forced air refrigeration system contained in a removable cassette for easy servicing and maintenance
- Waste heat recovery vaporiser system—no need for external drain
- Longer life anti corrosive evaporator coil coating
- Swivel and brake castors
- Threaded castors allow simple leg changeover if required
- Designed and built to international quality standards for reliability and performance—HACCP compliant
- Face mounted hinges for plinth mounting



MODEL		1 DOOR	2 DOOR	3 DOOR
H (Refrigerator +1°/+4°C)	White	HJ1SCBA	HJ2SCBA	HJ3SCBA
H (Refrigerator +1°/+4°C)	Stainless Steel	HJ1SCBASS	HJ2SCBASS	HJ3SCBASS

SPECIFICATIONS

CAPACITY LITRES	250	500	750
GN PANS 100 MM DEEP (INCLUDED)	10 X 1/6	18 X 1/6	24 X 1/6
DIMENSIONS - W X D X H (ON CASTORS) MM	1152 W x 771 D x 845 H	1815 W x 771 D x 845 H	2476 W x 771 D x 845 H
WEIGHT UNPACKED (KG)	160	210	240

STANDARD INCLUSIONS ***

DOOR TYPE	Standard: SD (Solid Door) Optional: DR (Drawer)		
FINISH (INTERIOR & EXTERIOR EXCLUDING UNDER. STAINLESS STEEL INTERNAL FLOOR & PREP AREA)	CB (White), CBB (Black), SS (Stainless Steel)		
SHELVES/DOOR	1	1	1
ELECTRICAL			
POWER SUPPLY	10 amp	10 amp	10 amp
FRIDGE MODELS	RUNNING AMPS	3.8	4.8
GAS TYPE			
REFRIGERANT	SELF CONTAINED	R134a	R134a
	REMOTE	R404a	R404a

REFRIGERATION WATTAGES FOR OPTIONAL REMOTE UNITS

REMOTE WATTAGES	600 @ -10°C SST	750 @ -10°C SST	980 @ -10°C SST
-----------------	-----------------	-----------------	-----------------